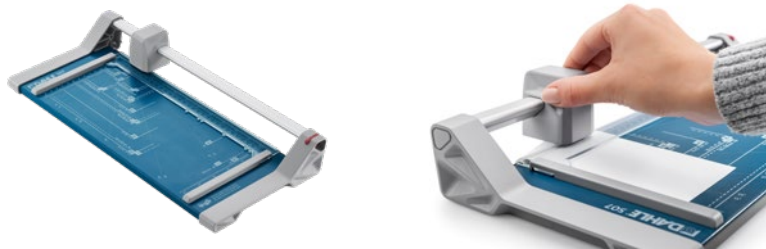


Rotary trimmer 507



- Compact entry-level rotary trimmer for hobby use
- Stable metal base with non-slip rubber feet to keep the rotary trimmer securely in place
- Helpful format lines on the base with mm division along the cutting edge make aligning the material to be cut even easier
- Self-sharpening steel rotary blade enclosed in safety cutting head, ground
- Lower steel blade
- Pressure rail with helpful markings
- Automatic clamping on the cutting line to quickly fix in place the material to be cut
- Two scale bars with mm scale for an exact 90° cut
- Cutting head easy to change
- Creative set for model 507 with three cutting heads for perforation, folds and deckle-edge cut is optionally available (980)

Article number	00507-24040
Cutting length (mm)	320
DIN	A4
Cutting capacity (mm)	0,8
Cutting capacity A4 80 g/sm*	8
Table size (overall dimensions) (mm)	449 mm x 209 mm
EAN	4009729069066
Suitable accessories	Creative set with three cutting heads for model 507 (third generation)



*The indicated sheet capacity for cutting machines is due to standard paper weight of 80 gsm but is still subject to texture, quality and state of paper. All of such information is based on the general formula 10 sheets = 1 mm stack height and may only be used as an aid to orientation for the selection of the cutting machine.